

LZB Glass Tube Rotameter

LZB-FA100 Series

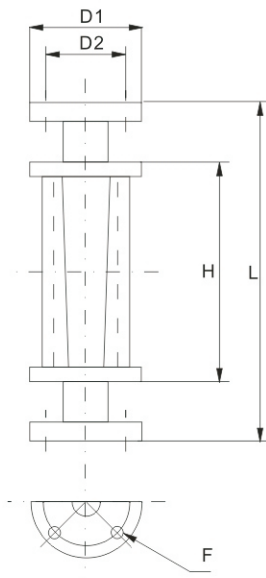
LZB-FA100 Glass Rotator Flowmeter, This flowmeter is highly sensitive and works in a wide range with low pressure loss, besides other advantages e.g. easy to operate etc. It is usually used for low pressure, high temperature sheer liquid or gases without suspending particles and has been widely employed in various industries e.g. petroleum, chemicals, electronics, environmental protection, power supply and medicine etc.

Working Temperature: SS304 ≤ 120°C
 Accuracy: ± 3%F.S
 Range Rate: 10:1



Main Technical Parameters

Diameter (mm)	Range		Working Pressure (Mpa)
	Water (L/h)	Air (NL/min)	
15	30-300 60-600 80-800	10-100 20-200 25-250	≤ 0.8
20	90-900 120-1200 180-1800	20-200 30-300 50-500	
25	180-1800 300-3000 480-4800	50-500 100-1000 150-1500	
32	480-4800 600-6000 720-7200	200-2000 250-2500 300-3000	≤ 0.6
40	1-10 m³/h 1.2-12 m³/h 1.5-15 m³/h	18-180 Nm³/h 20-200 Nm³/h 25-250 Nm³/h	
50	1.2-12 m³/h 1.5-15 m³/h 1.8-18 m³/h	20-200 Nm³/h 25-250 Nm³/h 30-300 Nm³/h	
65	1.8-18 m³/h 3-30 m³/h 4-40 m³/h	25-250 Nm³/h 35-350 Nm³/h 40-400 Nm³/h	≤ 0.4
80	4-40 m³/h 5-50 m³/h 6-60 m³/h	40-400 Nm³/h 50-500 Nm³/h 60-600 Nm³/h	
100	6-60 m³/h 7-70 m³/h 10-100 m³/h	60-600 Nm³/h 70-700 Nm³/h 90-900 Nm³/h	



LZB-FA100 Outline and Installation Dimensions (mm)

Model	FA100-15	FA100-20	FA100-25	FA100-32	FA100-40	FA100-50	FA100-65	FA100-80	FA100-100
L	260	340	340	340	340	340	390	390	410
H (Glass tube length)	150	200	200	200	200	200	250	250	250
D1	95	105	115	135	145	160	180	185	205
D2	65	75	85	100	110	125	145	150	170
F	4-Φ14	4-Φ14	4-Φ14	4-Φ18	4-Φ18	4-Φ18	4-Φ18	4-Φ18	4-Φ18

LZB Glass Tube Rotameter

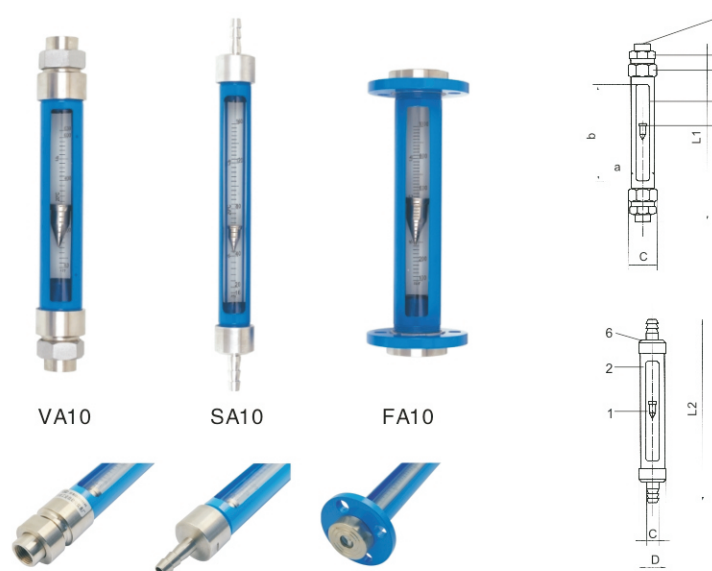
LZB-VA/SA/FA10 Series

This is a highly accurate glass rotameter with diversified joints and various options of scalings from to percentage. VA10 is threaded connection. SA10 is hose connection, FA10 is movable flange connection.

Main Technical Parameters

Model	Diameter (mm)	Range		Accuracy (± %)	Working Temperature	Working Pressure
		Water 20°C (L/h)	Air 101325Pa20°C (m³/h)			
VA 10-15 SA10-15 FA 10-15	15	4-40 10-100 16-160 25-250 36-360 46-460 65-650	6.3-63 12-120 20-200 30-300 40-400 63-630 75-750	0.12-1.2 0.3-3 0.5-5 0.8-8 1.2-12	0.2-2 0.4-4 0.6-6 0.9-9 2-20	≤ 1.0MPa
VA 10-25 SA 10-25 FA 10-25	25	40-400 63-630 100-1000 160-1600 250-2500	50-500 80-800 120-1200 200-2000 300-3000	1.6-16 2.5-25 4-40 6-60	2-20 3-30 5-50	
VA 10-40 SA 10-50 FA 10-50	40	160-1600 250-2500 400-4000	200-2000 300-3000 500-5000	5-50 8-80 12-120	6-60 9-90	
VA 10-50 SA 10-50 FA 10-50	50	250-2500 400-4000 630-6300 1000-10000 4000-16000	300-3000 500-5000 800-8000 1500-15000	10-100 16-160 30-300	12-120 20-200	≤ 0.7MPa

Note: Model with "F" : corrosion resistant model, e.g VA10-15F



Material of 10 Series

No.	Material	No.	Material
1	SS304 SS316	5	SS304, 45#
2	45#	6	SS304, AL
3	AL or SS304	7	SS304, 45#
4	45# or SS304	8	AL, SS304

VA 10 Outline Dimension

Diameter (mm)	Display window size a x b	VA10 Threaded Connection		
		L1	C	Thread
15	26 × 230	408	53	1/2" BSP
25		414	75	1" BSP
40	40 × 230	428	92	1 1/2" BSP
50	50 × 230	431	116	2" BSP

SA 10 Outline Dimension

Diameter (mm)	Display window size a x b	SA 10 Hose Connection		
		L2	C	D
15	26 × 230	400	Φ13.5	Φ44
25		450	Φ27	Φ65
40	Φ44		Φ80	
50	Φ53		Φ103	

FA 10 Outline Dimension

Diameter (mm)	Display window size a x b	FA10 Flange Connection			
		L3	C	D	E
15	26 × 230	320	Φ65	Φ95	4-Φ14
25			Φ85	Φ115	
40	40 × 230		Φ110	Φ145	4-Φ18
50	50 × 230	Φ125	Φ160		

LZB Glass Tube Rotameter

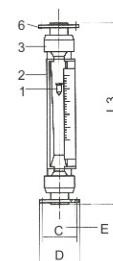
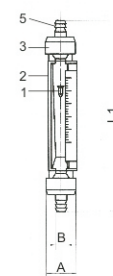
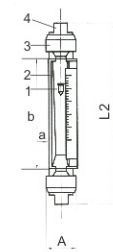
LZB-VA/SA/FA20 Series

This is a highly accurate glass rotameter with diversified joints and various options of scalings from to. Percentage. VA20 is threaded connection.SA20 is hose connection,FA20 is movable flange connection.

Main Technical Parameters

Model	Diameter (mm)	Range		Accuracy (± %)	Working Temperature	Working Pressure		
		Water 20°C (L/h)	Air 101325Pa20°C (m³/h)					
VA 20-15 SA20-15 FA 20-15	15	4-40 10-100 16-160 25-250 36-360 46-460 65-650	6.3-63 12-120 20-200 30-300 40-400 63-630 75-750	0.12-1.2 0.3-3 0.5-5 0.8-8 1.2-12	0.2-2 0.4-4 0.6-6 0.9-9 2-20	-20~+60°C or -20°C~+120°C	≤1.0MPa	
VA 20-25 SA20-25 FA 20-25	25	40-400 63-630 100-1000 160-1600 250-2500	50-500 80-800 120-1200 200-2000 300-3000	1.6-16 2.5-25 4-40 6-60	2-20 3-30 5-50			
VA20-40 SA 20-40 FA 20-40	40	160-1600 250-2500 400-4000	200-2000 300-3000 500-5000	5-50 8-80 12-120	6-60 9-90			≤0.9MPa
VA20-50 SA 20-50 FA 20-50	50	250-2500 400-4000 630-6300 1000-10000 4000-16000	300-3000 500-5000 800-8000 1500-15000	10-100 16-160 30-300	12-120 20-200			≤0.7MPa

Note:Model with "F" : corrosion resistant model, e.g VA20-15F



VA 20 Outline Dimension

Diameter (mm)	VA20 Threaded Connection			
	Display window size a x b	L2	A	Thread
15	33x235	375	58	1/2"BSP,1/2"NPT
25	50x240		74	1"BSP,1"NPT
40	65x235		92	1 1/2"BSP,1 1/2"NPT
50	85x230		112	2"BSP,2"NPT

SA 20 Outline Dimension

Diameter (mm)	SA 20 Hose Connection			
	Display window size a x b	L1	A	B
15	33x235	400	58	17
25	50x240	450	74	30
40	65x235		92	44
50	85x230		112	54

FA 20 Outline Dimension

Diameter (mm)	FA 20 Flange Connection				
	Display window size a x b	L3	D	C	E
15	33x235	425	Φ 95	Φ 65	4-Φ 14
25	50x240		Φ 115	Φ 85	4-Φ 14
40	65x235		Φ 145	Φ 110	4-Φ 18
50	85x230		Φ 160	Φ 125	4-Φ 18

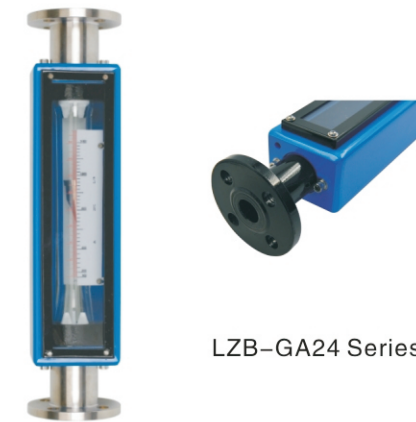
Material of LZB-VA/SA/FA20 series

No.	Material	No.	Material
1	SS304 SS316	4	SS304,45#
2	AL	5	SS304,AL
3	AL	6	SS304,45#

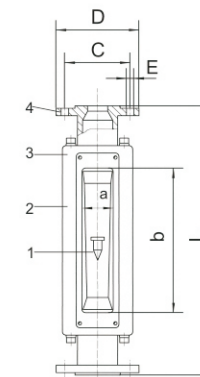
LZB Glass Tube Rotameter

LZB-GA24 Serise

This series flow meter is one type of glass rotameter,compared with the other products of the same type, it has advantages of high measuring precision,great interchangeability.We can provide mm graduation scale, percentage scale and dismountable scale,it is conbenient for different users to use.



LZB-GA24 Series



LZB-GA24 Series Structure Diagram

Main Technical Parameters

Model	Diameter (mm)	Range		Accuracy (± %)	Working Temperature	Working Pressure		
		Water 20°C (L/h)	Air 101325Pa20°C (m³/h)					
GA24-15 GA 24-15F	15	4-40 10-100 16-160 25-250 36-360 46-460 65-650	6.3-63 12-120 20-200 30-300 40-400 63-630 75-750	0.12-1.2 0.3-3 0.5-5 0.8-8 1.2-12	0.2-2 0.4-4 0.6-6 0.9-9 2-20	-20~+60°C or -20°C~+120°C	≤1.0MPa	
GA 24-25 GA 24-25F	25	40-400 63-630 100-1000 160-1600 250-2500	50-500 80-800 120-1200 200-2000 300-3000	1.6-16 2.5-25 4-40 6-60	2-20 3-30 5-50			
GA 24-40 GA 24-40F	40	160-1600 250-2500 400-4000	200-2000 300-3000 500-5000	5-50 8-80 12-120	6-60 9-90			≤0.9MPa
GA 24-50 GA 24-50F	50	250-2500 400-4000 630-6300 1000-10000 4000-16000	300-3000 500-5000 800-8000 1500-15000	10-100 16-160 30-300	12-120 20-200			≤0.7MPa

Note:Model with "F" : corrosion resistant model

LZB-GA24 Outline Dimension

Diameter (mm)	Display window size a x b	L	C	D	E
15	37×302	500	Φ65	Φ95	4-Φ 14
25	52×294		Φ85	Φ115	
40	64×278		Φ110	Φ145	4-Φ 18
50	94×266		Φ125	Φ160	

LZB-GA24 Material

NO.	Material	NO.	Material
1	SS304,SS316	4	45#, SS304,
2	45#		
3	Acrylic		